

Precision stencil printing. Just got a lot faster.

MYPro S30™ Stencil Printer

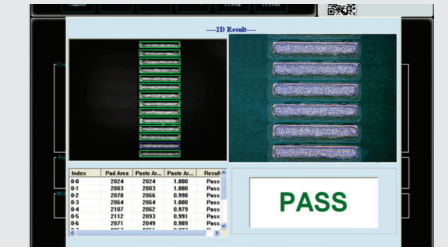
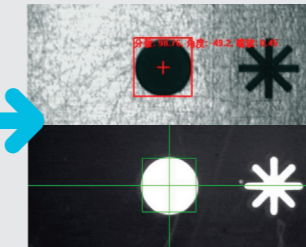
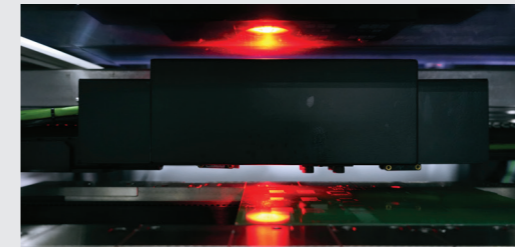


Introducing
the ground-
breaking
MYPro S30 series
of stencil
printers.

Specifications MYPro S30™

PERFORMANCE	
Machine alignment capability	2≤Cmk @ ±7microns (at 6Sigma) (CNAS certification)
Process alignment capability	2≤Cpk @ ±15microns (at 6Sigma) (CNAS certification)
Core cycle time	< 7s (exclude printing & cleaning)
Product changeover time	< 5min
New product set-up time	< 10min
BOARD HANDLING	
Board size range (mm)	Standard: 50mm × 50mm - 510 × 510mm Optional: 50mm × 50mm - 610 × 510mm
PCB thickness	0.6-6mm (below 0.6mm fixtures are required)
PCB maximum weight	5kg
Stencil frame size (L×W)	470mm × 370mm - 780mm × 737mm
Stencil thickness	20-40mm
PCB edge clearance	3mm
PCB bottom clearance	Programmable 13mm (23mm optional)
Clamping method	Programmable motorized rear rail Top clamping Side clamping Vacuum clamping
Support method	Magnetic pin Side support block Auto flexible pin (option) ≤1% diagonal
PRINTING PARAMETER	
Squeegee type	Steel/rubber squeegee blade (angle 60°/55°/45°)
Squeegee pressure	0-15kg
Printer speed	10-200mm/s
Snap-off speed	0.01-125mm/s (can be programmed to 3 steps control)
Separation option	Separation after squeegee up; Squeegee up after separation
Conveyor speed	100-1500mm/s
Conveyor direction	L→R, L→L, R→L, R→R
Table adjustment range	X: ±4mm; Y: ±6mm; 0: ±2°
Cleaning system	1. Drops of rain type cleaning system 2. Dry/Wet/Vacuum modes
OPTICAL SYSTEM	
Field-of-view (FOV)	Standard: 6.4 × 4.8mm (optional 10 × 8mm)
Fiducial types	Standard shape fiducial, Pad/Hole
Vision methodology	CCD camera Telecentric concentric vision system Four direction independent views Annular LED lighting source
FACILITIES REQUIREMENT	
Power supply	AC: 220V±10%, 50/60Hz 1Φ 3kW, 13A
Air pressure	4-6kg/cm ²
Air consumption	≈ 0.007m ³ /min
Operation temperature	-20°C - +45°C
Operation humidity	30-60%
Machine weight	~ 1000kg
Approximate dimensions	(L)1.250mm × (W)1.440mm × (H)1.510mm
Operating system	Windows 10
Acoustic noise level	< 87dB
Certification standards	CE

STANDARD FEATURES



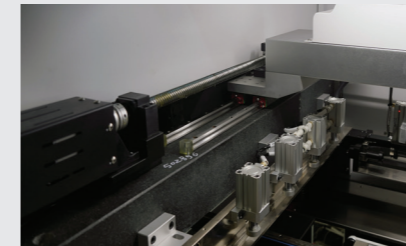
Vision system

The CCD camera performs simultaneous upward and downward inspections, aided by an intelligent adaptive lighting system and an optical ring that ensures uniform and high brightness coaxial lighting. This setup accommodates specialized fiducial marks on any pad, ranging from 0.5mm to 3mm in size. Further flexibility is achieved through multiple light source options, allowing the vision system to seamlessly work with a variety of PCBs.

2D inspection

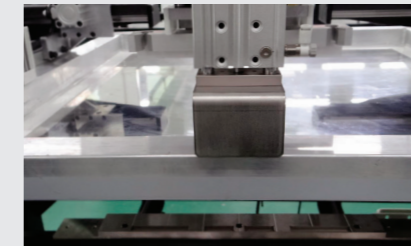
Experience the benefits of reliable 2D inspection and SPC tools integrated into our stencil printer. With real-time monitoring and meticulous data analysis, our system ensures optimum print quality.

SOLID FOUNDATIONS AND PRECISE CONTROL



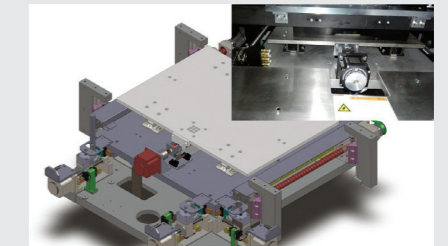
Reliable squeegee system

The squeegee system incorporates a ball-screw mechanism with a servo direct connection, exemplifying a robust design that guarantees reliability and repeatability.



Quick stencil positioning stopper

A user-friendly feature that ensures precise positioning while preventing over-insertion. This intelligent mechanism enhances efficiency by minimizing setup time and reducing errors during the production process.



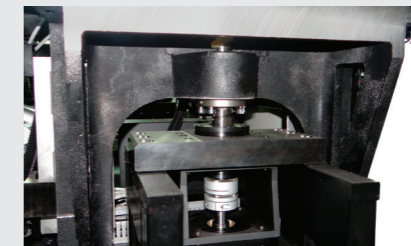
Motorized table height adjustment

Enables motorized adaptation to various PCB thicknesses, ensuring flatness and perfect fit for precise printing.



Close-loop squeegee pressure control

Featuring pressure feedback display, automatic feedback compensation and pressure equalization, this system enhances printing process stability while extending the life of stencil and scraper.



Z-axis control

The lifting table is directly connected with servo and ball screw for precise control of the lifting position and snap-off precision, improving movement rigidity.

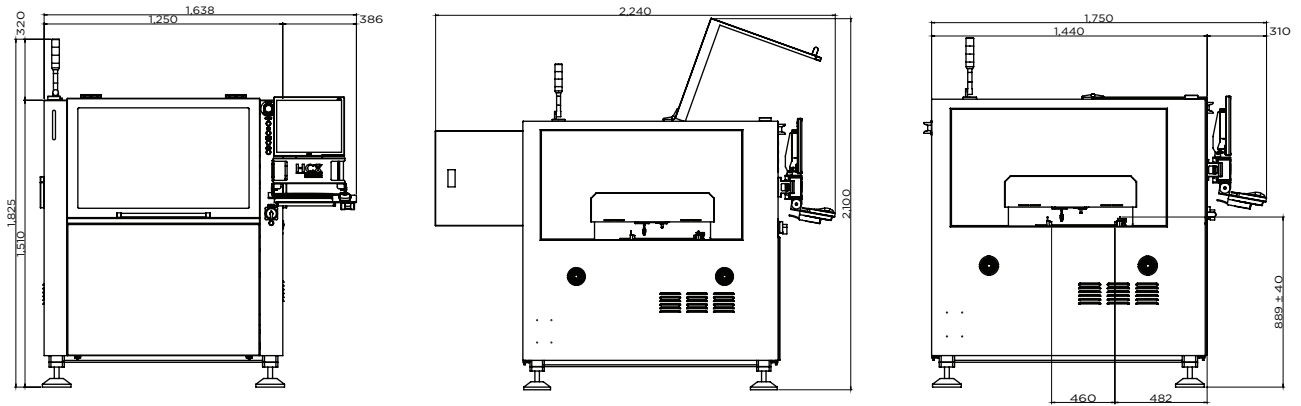


Dry/wet/vacuum cleaning module

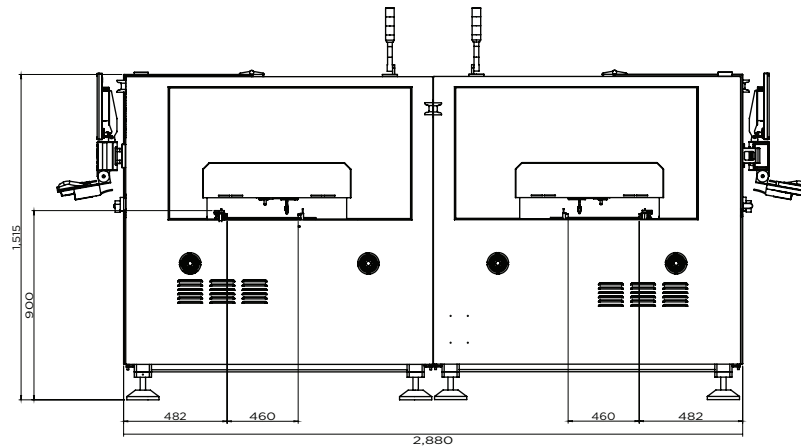
Explore a stencil printer featuring three cleaning methods: dry wipe, wet wipe, and vacuum wipe, offering tailored solutions for diverse cleaning needs. This printer accommodates various cleaning roll paper lengths, ensuring flexibility in application. The precision spray system employs a top-down spray device that dynamically adjusts the spray amount and range based on PCB size, guaranteeing accurate cleaning results.

DIMENSIONS

[mm]



BACK-TO-BACK POSITIONING



MYCRONIC

MYCRONIC.COM

SWEDEN
Mycronic AB
PO Box 3141
Nytorpsvägen 9
SE-183 03 Täby
Tel: +46 8 638 52 00

GERMANY
Mycronic GmbH
Tel: +49 89 45 24 24 8-0

UK
Mycronic Ltd.
Tel: +44 1202 723 585

FRANCE
Mycronic S.A.S.
Tel: +33 1 41 80 15 80

NETHERLANDS
Mycronic B.V.
Tel: +31 402 62 06 67

USA
Mycronic Inc.
Tel: +1 978 495 9799

SOUTH KOREA
Mycronic Co. Ltd.
Tel: +82 31 387 5111

CHINA
Mycronic Co., Ltd.
Tel: +86 21 3252 3785/86

SINGAPORE
Mycronic Pte Ltd.
Tel: +65 6281 7997

JAPAN
Mycronic Technologies Corporation
Tel: +81 42 433 9400

Specifications are subject to change without notice. Mycronic, MYDATA, MYDATA automation and MY: Mycronic 4.0; MYNews: MYCare; MYSynergy, MYTrilogy; MYPro, MYPro Line: MY100, MY100e, MY200, MY300, MY300DX, MY300EX, MY300HX, MY300LX, MY300SX, MY500, MY600, MY700, MY700JD, MY700JP, MY700JX; MYPro A40, A40DX; MYPro S20; MYPro S30; MYPro I50, I51, I80, I81, I90, I91; MYSmart, MYC10, MYC50, MYC60, MYD10, MYD50, MYT10, MYT50; Mycronic SMD Tower; MYTower 5, 6, 6+, 7+, 5x, 6x; VI TECHNOLOGY; VIT; 5K, 5K3D, 8K, 8K3D, 9K, 9K3D; PI, PI Pico, PI Primo; SIGMA Link; MX7, HYDRA, Midas, ISIC; Agilis, Agilis Linear Magazine (ALM), Agilis Linear Magazine Flex (ALM FLEX), Agilis Stick Magazine (ASM), Agilis Tray Magazine (ATM); Mycronic Tray Exchanger (TEX), Mycronic Tray Wagon Magazine (TWM); Mycronic Dip Unit (DPU); Mycronic Linescan Vision System (LVS); Mycronic Assembly Process Management (APM) including; JPSys, STSys, TPSys, MYCam, MYCenter, MYCenter Analysis, MYLabel, MYPlan, MYPro Connect, MYPro Link, MYTrace and FlowLine are registered trademarks or trademarks of Mycronic AB. Mycronic AB is ISO 9001:2015 and ISO 14001:2015 certified.